



Opioid and Naloxone Education

Essentia Health Collaboration

Heidi.Eukel@ndsu.edu

www.one-program.org



Table of Contents

A. Triage Tool

Use this flowchart to determine which services to offer to your clients.

B. Medication Safety Questionnaire and Outcomes

FRONT: Use this questionnaire for **every patient** and re-assess every 6 months

BACK: Use this to document what services were provided to each patient

Provide Detera bag and pill organizer as needed. For more supplies, contact heidi.eukel@ndsu.edu

For clients with opioid:

C. Screening and Outcomes

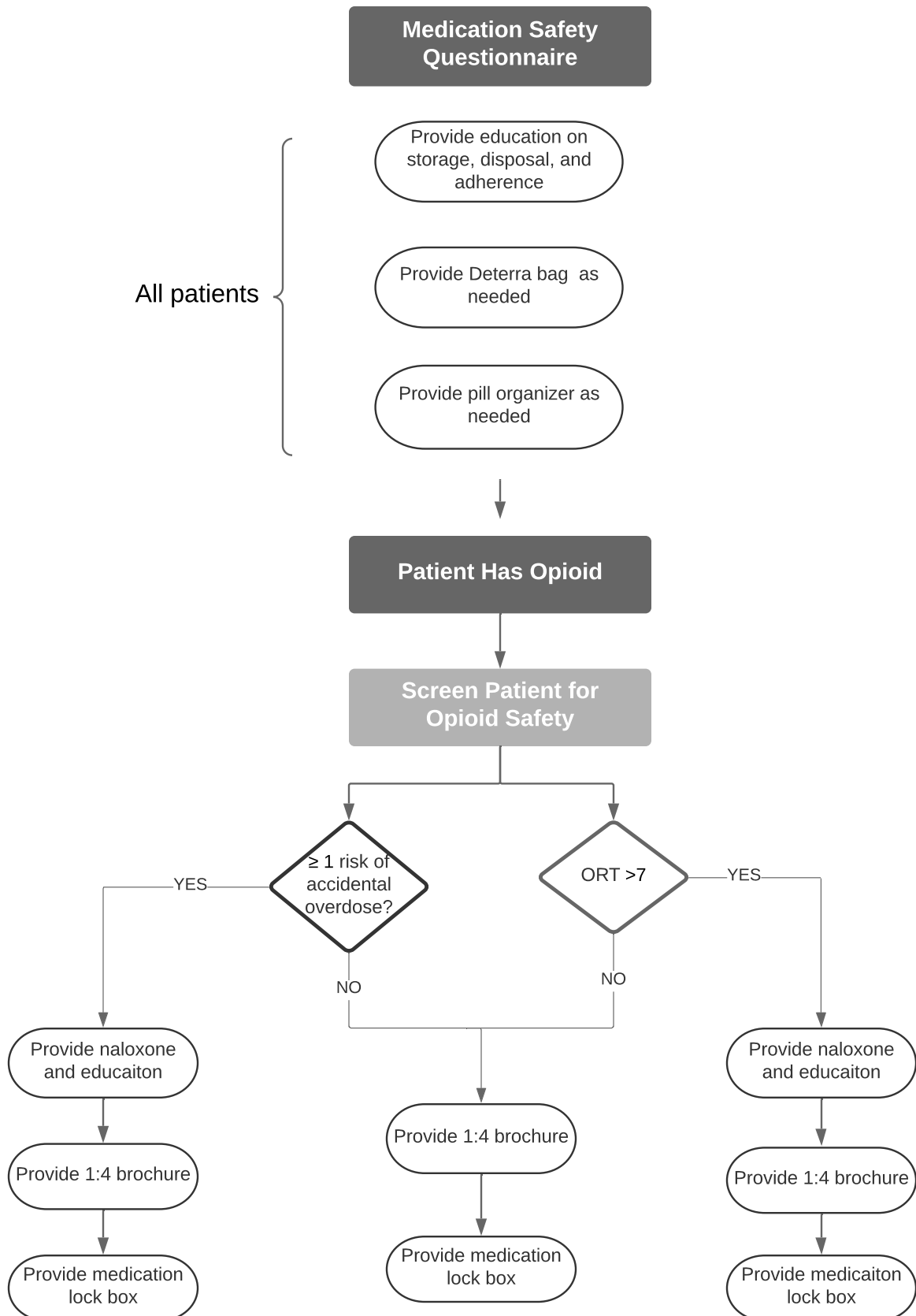
FRONT: Use this tool to screen each patient for opioid misuse and overdose risk

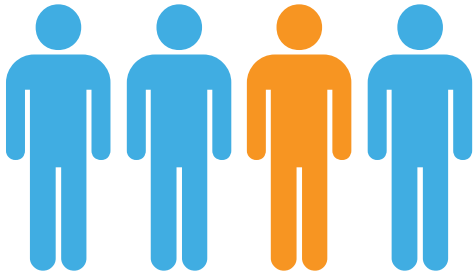
D. Patient Brochure for Opioid Safety

Provide one of these brochures to each patient who is actively taking or has an opioid medication in the home

For more brochures, contact heidi.eukel@ndsu.edu





E. FAQ document





1 in 4
people receiving
long-term opioid therapy
**STRUGGLES WITH
ADDICTION**

Prescription opioid addiction A GROWING EPIDEMIC...

-  Opioids work by blocking the feeling of pain without fixing the underlying cause.
-  Prescription opioids may be habit forming and lead to addiction even when taken as prescribed.
-  Patients taking prescription opioids are also at risk for impaired breathing, unintentional overdose or death.
-  Caution when taking prescription opioids with:
 - alcohol
 - benzodiazepines (ex. Xanax®, Valium®)
 - muscle relaxers (ex. Soma®, Flexeril®)
 - hypnotics (ex. Ambien®, Lunesta®)



*Developed in partnership with the ND
Board of Pharmacy and ND
Pharmacist Association*

For more information, go to:
prevention.nd.gov/takeback

KEEP YOURSELF AND YOUR LOVED ONES SAFE:



Lock

Keep medication out of sight and in a safe and secure place.



Monitor

Keep track of medication and take only as directed.



Take Back

Drop off unused medication at local Take Back locations.
To find a location near you, go to www.takeback.nd.gov.

IF YOU ARE CONCERNED:

- Talk to your pharmacist or practitioner about **naloxone**, a treatment to reverse overdose.
- Follow-up with your practitioner
- Find behavioral health treatment providers at www.findtreatment.samhsa.gov.



Frequently Asked Questions

- **How often should I screen my patients?**
 - Clients should be screened initially or at admission and then every 6 months thereafter. If there is a significant event (i.e. surgery) please feel free to
- **For the ORT, what level of “family history” is suggested?**
 - Family history includes first degree biological family members (parents, siblings, and children)
- **With OTC sleep aids, do you count herbals such as valerian root and melatonin?**
 - On the patient intake form, we are more concerned with products that contain diphenhydramine. Herbals have been shown in a few small case reports but when taken at normal doses, this isn't as much of a concern.
- **What if a patient refuses the opioid screening or medication lock box?**
 - These are services above and beyond your standard care. Clients have an option to refuse. Simply document this.
- **For Narcan Nasal, what training could be used to instruct clients on use?**
 - Here is a valuable video! <https://www.youtube.com/watch?v=WnjgrRNMfKM>